

COMMUNITY NOTICE

Port Moody

Tunnel Boring Operations for the Evergreen Line Clarke Road between Seaview Drive and Glenayre Drive

Construction for the Evergreen Line includes a two-kilometre bored tunnel with tunnel portals located in Port Moody and Coquitlam. The tunnel is being constructed under Clarke Road using a 10-metre diameter tunnel boring machine (TBM). The TBM will make one pass, creating a single tunnel that will then be divided by a wall to separate the trains travelling in opposite directions.

The TBM will resume tunnel boring operations in early September and will be within the vicinity of your home shortly.

WHAT TO EXPECT

- Tunnel boring and TBM maintenance will continue to be a 24-hours-a-day operation, seven days a week.
- The TBM will be approximately 40 metres below the surface as it passes by your home over the next few weeks. Refer to the map (on the back page) showing the location of the tunnel in your area.
- Residents may experience some noise and vibration when the TBM is nearby, including when it approaches and leaves your area. Residents may feel a low rumble that stops and starts intermittently.

HOW THE TBM WORKS

The TBM advances by excavating soil in front of the TBM cutterhead which rotates through the earth. The excavated soil is stored and controlled in a chamber located inside the cutterhead. The excavated soil is removed by a conveyor belt to the tunnel work area. Crews carefully control and monitor the volume of soil travelling into and out of the machine to prevent imbalances.

As the TBM advances, a continuous ring of concrete segmented liners are installed to form the tunnel ring. These concrete segments create the permanent tunnel structure ensuring ground stability.

A program is also in place to monitor areas outside the tunnel. The program includes continuous survey of the ground in front of and above the TBM, including buildings and utilities located near the tunnel route. If any movements are detected, project staff are alerted immediately.

(Continued on Page 2)

ABOUT EGRT CONSTRUCTION

EGRT Construction has been awarded the contract to design and build the Evergreen Line.

For more information about the Evergreen Line Project, please visit www.evergreenline.gov.bc.ca.

CONTACT US

To find out more, or to receive traffic updates:

Traffic Information Line (available 24 hours, 7 days a week):

604-927-2080

Email: info@evergreenline.gov.bc.ca

Facebook: www.facebook.com/evergreenline

COMMUNITY NOTICE

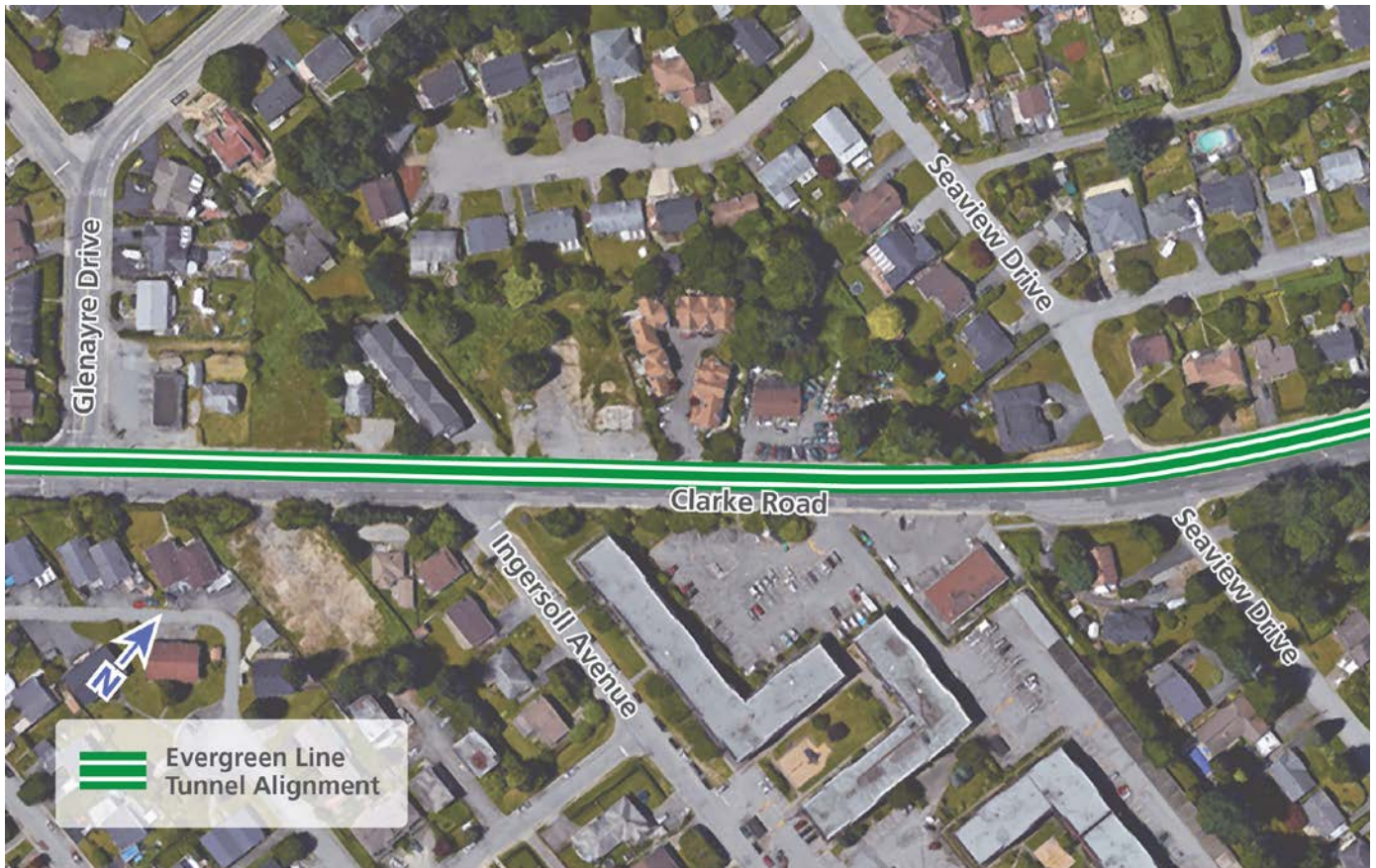
Port Moody

(Continued from page 1)

The TBM will break through at the south tunnel portal located just south of Kemsley Avenue on the west side of Clarke Road. Once tunnel boring is complete, the TBM will be removed and crews will begin the installation of concrete within the tunnel, followed by the installation of track work and power systems.

If you have comments or questions about the Evergreen Line Rapid Transit Project, please call the Evergreen Project Office at (604) 927-4452 or email info@evergreenline.gov.bc.ca. To contact EGRT Construction, the contractor who is building the Evergreen Line, please call 604-927-2080, available 24 hours a day, 7 days a week.

TUNNEL ALIGNMENT MAP



ABOUT EGRT CONSTRUCTION

EGRT Construction has been awarded the contract to design and build the Evergreen Line.

For more information about the Evergreen Line Project, please visit www.evergreenline.gov.bc.ca.

CONTACT US

To find out more, or to receive traffic updates:

Traffic Information Line (available 24 hours, 7 days a week):

604-927-2080

Email: info@evergreenline.gov.bc.ca

Facebook: www.facebook.com/evergreenline