

## COMMUNITY NOTICE

### Coquitlam

#### **Dismantling of the Tunnel Boring Machine and Construction Activities at the South Portal**

Boring of the two-kilometre tunnel for the Evergreen Line is anticipated to be complete in late November 2015. The tunnel boring machine (TBM) will break through at the south tunnel portal located just south of Kemsley Avenue on the west side of Clarke Road.

When boring is complete, crews will begin dismantling the TBM within the work site at the south west corner of Clarke Road and Kemsley Avenue (as shown on the map on page two). This will be followed by construction of the concrete base and walls in the TBM reception pit and in the tunnel, followed by the installation of utilities, trackwork and power systems.

#### **WHAT TO EXPECT**

- Once the TBM arrives at the work area at the south portal, dismantling of the TBM will begin. It will be a 24-hours-a-day operation, seven days a week for approximately two months.
- Crews will be using a large crane and other mobile equipment to dismantle the TBM and truck away the components.
- Nearby residents will hear noise related to the dismantling including the use of cutting tools, compressors, generators and the use of heavy machinery.
- Once the TBM is dismantled, crews will construct a concrete base and walls in the TBM reception pit and in the tunnel. This work will take approximately four months to complete and will include gravel and concrete deliveries, installing rebar and pouring concrete.
- When crews are working at night, construction lighting will be used and efforts will be made to angle the lighting to minimize effects on nearby residents.
- Every effort will be made to minimize the use of back-up beepers, including using flag persons to assist with the maneuvering of trucks. However, in some instances, back-up beepers may be required. When in use, crews will do everything possible to mitigate the noise, including the use of variable-volume back-up beepers on trucks and equipment.

#### **TRAFFIC PATTERN CHANGES**

As part of the TBM dismantling, there will be lane closures on Kemsley Avenue between Elmwood Street and Clarke Road. Lane closures will be in effect 24 hours a day. During this period:

- Access into Kemsley Avenue from Clarke Road will not be permitted.
- Exit out from Kemsley Avenue to Clarke Road will remain open.
- Residents wishing to access the Oakdale neighbourhood via Kemsley Avenue will be temporarily detoured to Elmwood Street.

*(Continued on page two)*

#### **ABOUT EGRT CONSTRUCTION**

EGRT Construction has been awarded the contract to design and build the Evergreen Line.

For more information about the Evergreen Line Project, please visit [www.evergreenline.gov.bc.ca](http://www.evergreenline.gov.bc.ca).

#### **CONTACT US**

To find out more, or to receive traffic updates:

Traffic Information Line (available 24 hours, 7 days a week):

604-927-2080

Email: [info@evergreenline.gov.bc.ca](mailto:info@evergreenline.gov.bc.ca)

Facebook: [www.facebook.com/evergreenline](http://www.facebook.com/evergreenline)

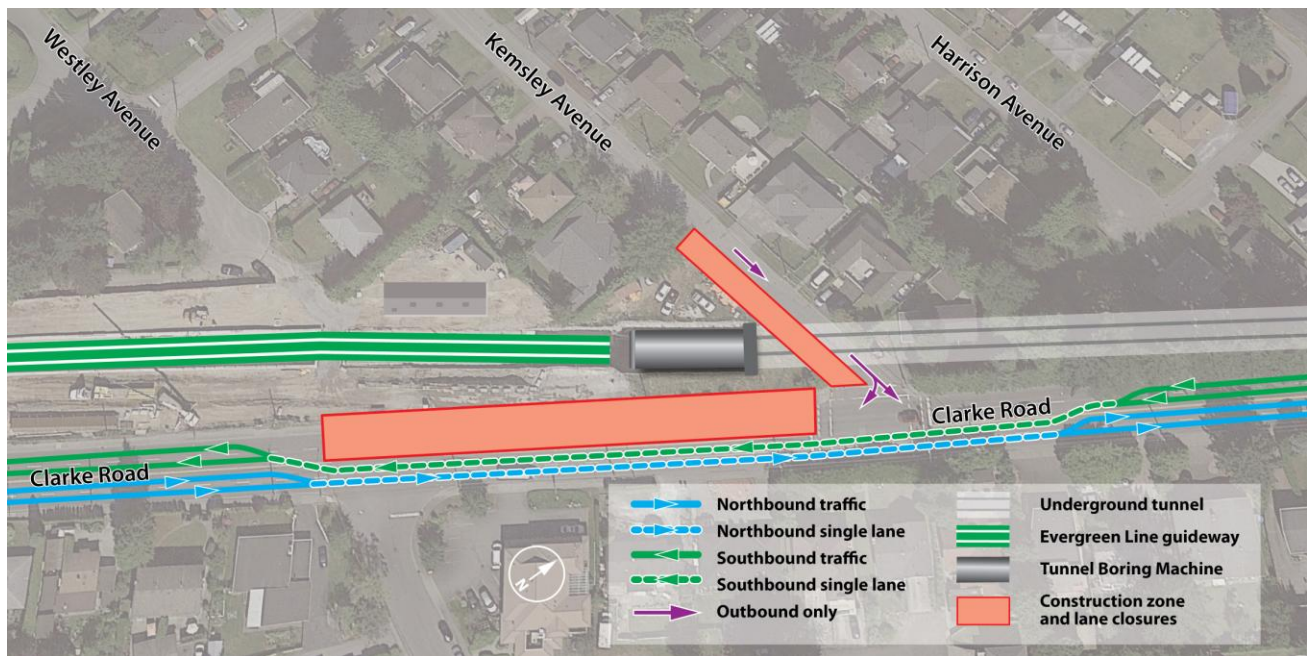
# COMMUNITY NOTICE

## Coquitlam

(Continued from page one)

- Lane closures on Clarke Road at Kemsley Avenue will also be implemented and will be in effect 24 hours a day. One lane of traffic in each direction on Clarke Road will be maintained.
- When lane closures are in effect, please watch for construction signs, drive with caution and follow the directions of traffic control personnel.
- Drivers may experience intermittent stoppages of two to three minutes on Kemsley Avenue and Clarke Road for haul trucks to enter and exit the work site. Traffic control personnel will be on-site to direct drivers.
- Temporary parking restrictions on Kemsley Avenue between Elmwood Street and Clarke Road will be in effect. Please watch for signs indicating the dates and times when parking restrictions are in place.
- To ensure the safety of transit users, the bus stop on the west side of Clarke Road just south of Kemsley Avenue will be temporarily closed. Please watch for transit signs that will indicate the closest bus stop or visit TransLink's [website](#) for more information.

### TUNNEL BORING MACHINE WORK SITE



If you have comments or questions about the Evergreen Line Rapid Transit Project, please call the Evergreen Project Office at (604) 927-4452 or email [info@evergreenline.gov.bc.ca](mailto:info@evergreenline.gov.bc.ca). To contact EGRT Construction, the contractor who is building the Evergreen Line, please call 604-927-2080, available 24 hours a day, 7 days a week.

#### ABOUT EGRT CONSTRUCTION

EGRT Construction has been awarded the contract to design and build the Evergreen Line.

For more information about the Evergreen Line Project, please visit [www.evergreenline.gov.bc.ca](http://www.evergreenline.gov.bc.ca).

#### CONTACT US

To find out more, or to receive traffic updates:

Traffic Information Line (available 24 hours, 7 days a week):

604-927-2080

Email: [info@evergreenline.gov.bc.ca](mailto:info@evergreenline.gov.bc.ca)

Facebook: [www.facebook.com/evergreenline](http://www.facebook.com/evergreenline)