

April 14, 2015

UPDATED



CONSTRUCTION AND TRAFFIC BULLETIN

Port Moody

Detour Route and Traffic Pattern Changes at Clarke Road and Seaview Drive

The tunnel boring machine (TBM) is currently under Clarke Road at Seaview Drive as part of planned regular maintenance to inspect and replace the cutterhead tools before the TBM advances. While completing maintenance under Clarke Road at Seaview Drive, despite our ground improvement program, some ground material entered the TBM chamber and an air pocket developed. The air pocket resulted in a hole in the asphalt on Clarke Road, which has been filled with cement grout.

Safety is the first priority on the Evergreen Line project and as precaution to ensure public safety, a traffic pattern change has been implemented at Clarke Road and Seaview Drive while crews address the situation within a secure fenced area. Additional ground improvements are being undertaken to stabilize the ground in front of the TBM to allow maintenance to continue.

One northbound lane in this section of Clarke Road is open. Traffic signage has been activated and a traffic detour for southbound traffic has been implemented (*see map on page two*). Please follow the directions of all traffic control personnel. The southbound lane will be reopened after additional investigative work is complete. We will provide an update on our website www.evergreenline.gov.bc.ca when we have more information about re-opening two through lanes on Clarke Road.

WHAT TO EXPECT

- Drivers travelling southbound from Port Moody to Coquitlam will be detoured at Cecile Drive to Angela Drive and Glenayre Drive to access Clarke Road.
- This detour route will be in effect 24 hours a day until southbound traffic on Clarke Road can be reinstated.
- Traffic control personnel will be monitoring the detour route to assist drivers and maximize traffic flow.
- The detour speed limit is 30 kilometers per hour on Angela Drive and Cecile Drive and speed reader boards have been implemented to remind drivers to follow the posted speed limit.
- Drivers, cyclists and pedestrians are asked to watch for construction and detour signs, observe posted speed limits, proceed with caution and follow the directions of traffic control personnel.

(Continued on Page 2)

ABOUT EGRT CONSTRUCTION

EGRT Construction has been awarded the contract to design and build the Evergreen Line.

For more information about the Evergreen Line Project, please visit www.evergreenline.gov.bc.ca.

CONTACT US

To find out more, or to receive traffic updates:

Traffic Information Line (available 24 hours, 7 days a week):
604-927-2080

Email: info@evergreenline.gov.bc.ca

Facebook: www.facebook.com/evergreenline

April 14, 2015

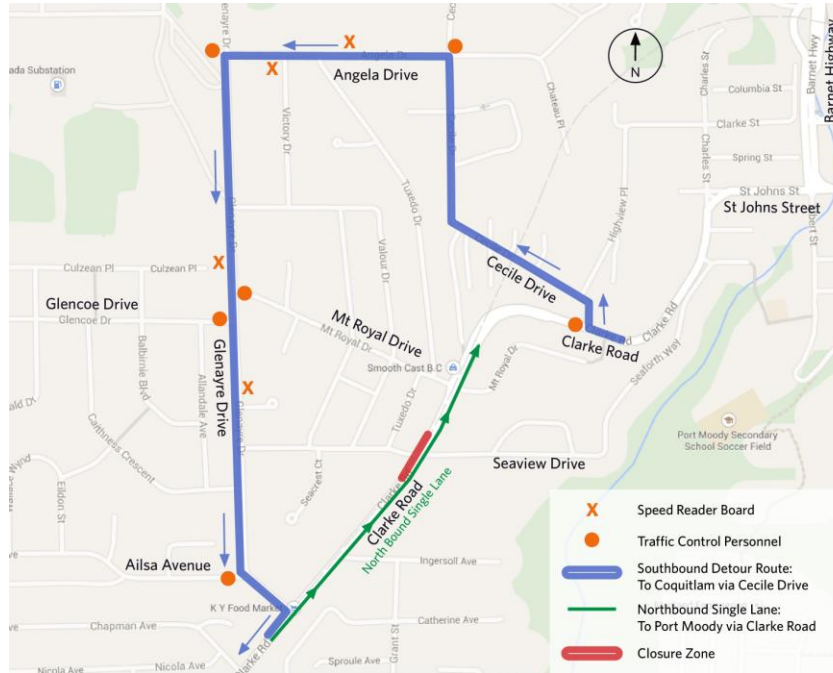
UPDATED

CONSTRUCTION AND TRAFFIC BULLETIN

Port Moody

(Continued from page 1)

SOUTHBOUND DETOUR ROUTE



Safety

- The speed limit on Clarke Road near the work site will continue to be reduced from 50 kilometers per hour to 40 kilometers per hour while work is underway.
- Digital speed warning boards have been installed to warn drivers if they are travelling too fast and additional enforcement will be in effect during the duration of construction.
- Traffic control personnel will be on-site at Clarke Road and Seaview Drive during working hours to assist drivers.
- Drivers, cyclists and pedestrians are asked to watch for construction and detour signs, observe posted speed limits, proceed with caution and follow the directions of traffic control personnel.

When the TBM maintenance is complete and the work site has been removed, the roadway at Clarke Road and Seaview Drive will be restored.

Your continued patience and understanding is appreciated. Please contact the Traffic Information Line at 604-927-2080, available 24 hours a day, seven days a week with any questions or concerns. For more information visit our website www.evergreenline.gov.bc.ca.

ABOUT EGRT CONSTRUCTION

EGRT Construction has been awarded the contract to design and build the Evergreen Line.

For more information about the Evergreen Line Project, please visit www.evergreenline.gov.bc.ca.

CONTACT US

To find out more, or to receive traffic updates:

Traffic Information Line (available 24 hours, 7 days a week):
604-927-2080

Email: info@evergreenline.gov.bc.ca

Facebook: www.facebook.com/evergreenline